

Dance Company Of Boston Plans Performance At Potsdam College

The Potsdam College Dance Ensemble and the Associated Colleges of the St. Lawrence Valley will present a performance by Concert Dance Company of Boston on Jan. 31 at 8:15 p.m., at the Snell Music Theater, Potsdam College. New England's contemporary dance repertory company, Concert Dance has been heralded as "fabulous ... a dazzling level of energy." (Boston Globe)

Tickets to the performance on Jan. 31 are \$4 for general admission and \$2 for students and senior citizens, and are on sale at Westons, Pear Tree (Canton), the Potsdam College Union and at the door.

For 20 years, Concert Dance Company of Boston has explored the spectrum of contemporary dance, captivating audiences with the 20th century's most important

and influential choreography. The Company's repertory ranges from the works of great masters like Merce Cunningham, to the avant-garde explorations of Kei Takei and Lucinda Childs, to the cutting-edge excitement of young superstars like Mark Morris and Mark Dendy.

Concert Dance Company was founded in 1967 and began touring with a sold-out series at New

York's Dance Theater Workshop in 1976. Clive Barnes of "The New York Times" heralded the performance for its "... humor, beauty and dexterity ... a special

pleasure." Since that promising debut, CDC has travelled throughout New England as a member of the New England Touring Program and has toured na-

tionally. CDC has been generously supported by the National Endowment for the Arts and the Massachusetts Council on the Arts and Humanities.

Two Gibson Gallery Exhibits Continue

The exhibition of Japanese prints from Munson-Williams-Proctor Institute and of children's book illustrations from the collection of Princeton University continues at Gibson Gallery through Jan. 25 at Potsdam College. Gallery hours are noon to 4 p.m. daily and are made possible by the Friends of Gibson Gallery.

storyteller, will offer a program for children and adults in the Gallery. Yardley has performed on National Public Radio, toured Northern New York twice acting with the Prop-Trunk Players, and performed for adults and children from Baltimore, Md. to Ontario, Canada. She is an active member of the National Association for the Preservation and Perpetuation of Storytelling.

On Jan. 20 at 7 p.m. in Gibson Gallery, John Thompson, illustrator, will speak about his work and the field of illustration as a

career. Thompson's work is represented in the current exhibition.

Both programs are made possible by the Friends of Gibson Gallery, Potsdam College and the New York State Council on the Arts. For more information call 315-267-2254.

In the arts

ROXY 1 & 2
MAIN ST POTSDAM
265-9630

STARTS FRIDAY
EVE. AT 7:00 & 9:15
CLINT EASTWOOD
HEARTBREAK RIDE
ENDS THURSDAY
STAR TREK IV

STARTS FRIDAY
Daily At 7:15 & 9:15
THREE AMIGOS!

AMERICAN
CANTON 386-2981
STARTS FRIDAY
DAILY 7:00 & 9:00
the Color of Money
PAUL NEWMAN
TOM CRUISE

Student MENC Chapter Cited For Excellence

The Potsdam College student chapter of the Music Education National Council (MENC) was cited for excellence from its national headquarters.

The chapter, comprised of approximately 160 students at The Crane School of Music, is the largest collegiate chapter in the nation. According to chapter president, Scott Parker of Palmyra, N.Y., the members were cited for their activities on behalf of music education in the North Country.

The chapter sponsors an annual conference, workshops on music

education, performance and master classes, and hosts a variety of state, regional, national and other music-making events and the North Country Jazz Ensemble Festival.

The annual Harvest Ball is a project of MENC and Music Theatre North for the benefit of both organizations.

Professor William Crowder advises the student chapter at The Crane School of Music.

MENC President at The Crane School Scott Parker is a junior who majors in music education and concentrates in trumpet studies.



CHILDREN'S BALLET — At the barre with instructor Allan Miles are (left to right) Lea Steinbruchel, Tracie Dalton and Loryn Croot of Potsdam. The girls are enrolled in the non-credit course "Children's Ballet" at Potsdam College. The course begins again on Jan. 20. To enroll phone 1-800-451-0005, ext. 2167 or 267-2167.

Arts, Crafts Offerings Noted

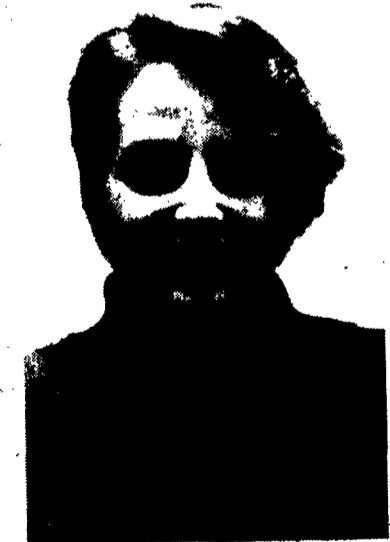
The arts and crafts and leisure hobbies are the subjects of six non-credit courses to begin at Potsdam College in January and February.

The courses are "Creative Knitting," "Drawing and Painting for Adults," "Life Drawing," "Photo-

journalism," "Electronic Writing Community," and "Introduction to Japanese Cooking."

Each course offers participants the chance to learn new skills or improve talents. For more information on registration fees, contact Potsdam College at 1-800-451-0005, ext. 2167 or 267-2167.

People



SUSAN J. WILLIAMS

STUDENT AMBASSADOR
Susan J. Williams, Rt. 2, Potsdam, a senior majoring in English and writing, has been selected to be a student ambassador for Potsdam College.

Student ambassadors, selected through faculty nominations and trained by the Career Services staff, provide information about college programs to employers in their home area. Employers, in turn, get to know Potsdam College more personally.

The ambassadors speak on behalf of the college and student body. Most jobs that will result will not be offered to the ambassadors themselves, but to classmates whose major programs best fit employer needs.

Pianist Busch Plans Recital

Pianist Gary Busch of The Crane School of Music will present a solo lecture-recital at 8:15 p.m. Thursday in the Sara Snell Theater. There is no charge for the event.

Busch will perform and discuss "Markrokosmos, Volume 1 — Twelve Fantasy Pieces after the Zodiac for Amplified Piano" by George Crumb. The lecture will be accompanied by slides of the score.

A member of the Potsdam faculty since 1983, Dr. Busch has appeared in numerous solo, chamber music and Lieder recitals throughout the United States and Canada.

Pianist Licad Performs

SYRACUSE — Pianist Cecile Licad will perform Beethoven's Piano Concerto No. 3 with the Syracuse Symphony at 8:30 p.m., Jan. 23 and 24 in the Crouse-Hinds Concert Theater.

Tickets range in price from \$6 to \$18.50 and are on sale at PHONECHARGE, 424-8200. For out of town orders call toll-free 1-800-331-0113.

NEWSBRIEF

CANTON — The St. Lawrence County Chamber of Commerce, Inc., will be accepting enrollments for coverage under its Blue Cross medical group during its opening period Jan. 15-Feb. 27 for coverage effective April 1. Inquiries before or after the opening period will not be considered.

Interested persons should call the County Chamber office at 386-4000 or write to Drawer A, Canton, 13876, during the opening period.

30%-50% off blouses

Orig. \$19.99 to \$36. Look ahead and save on a top selection of sweaters at terrific prices. Mega sweaters, dressy looks and bright casuals, each one the beginning of a great ensemble. Save on pastels, and primaries turned out in easy-care acrylic and blends. In juniors', misses' and women's sizes.



30%-50% off sweaters

Orig. \$18 to \$35. Go traditional, or try a new look. With savings like these, you can afford to treat yourself to lots of different styles. Like dressy bow front blouses and dobby blouses, casuals and versatile pleated tops. All in a range of pastel and bright colors, stripes, dots and more. In polyester and other blends, to make care a breeze.



25% off

Women's basics

The savings on these private pleasures are something to feel good about.

	Reg.	Sale
Lace cup bra	8.00	6.00
Pima cotton bra	7.00	5.25
All Woman* underwire bra	12.00	9.00
Sani-terry* bikini	2.25	1.68
Sani-terry* brief	2.50	1.87
Cotton crossover bra	7.50	5.62



Percentage off represents savings on original prices. Intermediate merchandise may have been taken on originally priced merchandise. Reductions from originally priced merchandise effective until stock is depleted. Sale prices on regularly priced merchandise effective through Saturday, Jan. 17, 1987.

© 1986, J. C. Penney Company, Inc.

JCPenney
POTSDAM PLAZA

Shop Monday through Saturday 9:30 to 9:00
Store Phone 265-4900

Sunday 12 (noon) to 5:00 P.M.

To Place a catalog order call 1-800-222-6161