



**POTTERY EXHIBIT**-Potter Arthur H. Sennett of Potsdam is shown here with one of the pieces in his Pepper Pot Series. A selection of those works is currently on exhibit at Danco Art Gallery in Northampton, Mass. Sennett has been a member of the art faculty at SUNY Potsdam since 1960.

## Sennett Works Displayed

Award-winning potter Arthur H. Sennett, 22 Garden St., Potsdam, and member of the art faculty at State University College at Potsdam, is currently exhibiting a selection of pieces from his Pepper Pot Series at Danco Art Gallery, Northampton, Mass. The show will run through March 11.

Sennett's ceramics are well known throughout the area. He has participated in numerous exhibitions as well as being active in the American Craftsmen's Council and the New York State Craftsmen organization.

A portfolio of his pottery is maintained by the council and is loaned to architects, authors, lecturers, gallery directors, shop owners, teachers and students throughout the nation.

Sennett, who holds degrees from Edinboro State College in Pennsylvania and the School for American Craftsmen, Rochester Institute of Technology, has been a member of the faculty at the Potsdam college since 1960.

## SLC Sets Play

**BRASHER FALLS**-St. Lawrence Central High School will present Irving Berlin's famous musical "Annie Get Your Gun" March 9 and 10 at 8 p.m.

The story revolves around legendary sharpshooter, Annie Oakley and her involvement with such colorful characters as Frank Butler, Chief Sitting Bull, and Buffalo Bill.

Heading the cast are Christine Compo as Annie, Chris Steenberg as Frank Butler, Tim Giuliani as Charlie Davenport, Harold Partlow as Buffalo Bill, Joe Gary and Chief Sitting Bull, Lynn Dawson as Dolly Tate.

Others in the cast include: Vincent DaRouchie, Mark LaMarche, Tina Hartigan, Renee Poisy, Ben Scharf, Heather Cameron, Wendy Simms, John Chambers, Tom O'Connor, Andy Ramer, Mike Ormsby, Chuck Burnell, Desera Barnes, Jan LaMarche, John Johnstone, Sonja LaClair, Jon Ayerse, Rick Ormsby, Michelle Brothers, John Logan, James Sauvie, Kathy Villave, Diane Hopkins, Beth Demo, Jody Daggett, Kim Logan, Becky Logan, Ginger Busch, Robin Cayea, Bobbi Folsom, Jackie Miller, Bonnie Cameron, Marie Murcay, Katy Brown, Dori Cline, Kevin Ward. Stage Manger is Jerry Crinklaw, Assisted by Howard Busch.

The production is directed by Mrs. Rose Holcomb. Musical director is Mr. Peter Goloski. Rehearsal accompanist is Bronwyn Shook. Choreographers, Mrs. Ann White, and Mrs. Carol Martin; costumes, Mrs. Jane Dyke; scene design, Patti Wolfe.

Tickets will be \$2.

## Canton Gallery Features Works

**CANTON**-The Canton Gallery, Inc., 10 Court St., Canton, will feature the photographic work of Stephen Sumner from March 4 until April 7.

Sumner is an associate professor of photography and art at State University College at Potsdam.

The public is invited to an opening reception for the artist at the gallery from 3-5 p.m. Sunday, March 4.

## Watercolor Dedication Set At Remington

**OGDENSBURG**-The Remington Art Museum will hold an open house Sunday, March 4 from 2 to 4 p.m. A Remington original water color and ink entitled "Arab Method Of Picketing A Horse" will be dedicated in memory of the late John G. Ward.

Some of the 1978 acquisitions or loan items will also be on display during the open house. The public is cordially invited. Refreshments will be served.

# Drawing Exhibition Opens With Baroque Music Concert in the arts

The fourth National Drawing Exhibition will open at State University College at Potsdam's Brainerd Hall Art Gallery at 8 p.m. Friday, March 2.

This exhibit, selected from nationwide entries, brings to Potsdam the wide variety of drawing media being used by today's artists. The works on view were chosen by California artist and art commentator Peter Plagens.

The drawing exhibition alternates with the prestigious Potsdam Prints exhibition, both of which brought national prominence to the Potsdam campus as a sponsor of important cultural events.

In conjunction with the opening of the exhibition, a concert of Italian baroque music will be presented at 7:15 p.m. in Brainerd Foyer by Potsdam artists Clive Henery, harpsichord; Joyce Henery, soprano; Lorie Winans, violin; and Mark Pritchard, cello.

The North Country community is invited to attend both the concert and the opening as well as to view the exhibition through March 25 during regular gallery hours.

## Bach, Liszt Works Featured In Recital

Dr. William Maul, organist and member of the State University College at Potsdam's Crane School of Music faculty, will present an organ recital at 8:15 p.m. March 6, in Helen M. Hosmer Concert Hall in the Crane School of Music complex.

Works to be performed include the Concerto in A-Minor by Vivaldi-Bach, Choral Prelude and Prelude and Fugue by Bach and Franz Liszt's Fantasia and Fugue.

The public is invited to attend this event without charge.

Further information may be obtained by calling 268-5040.

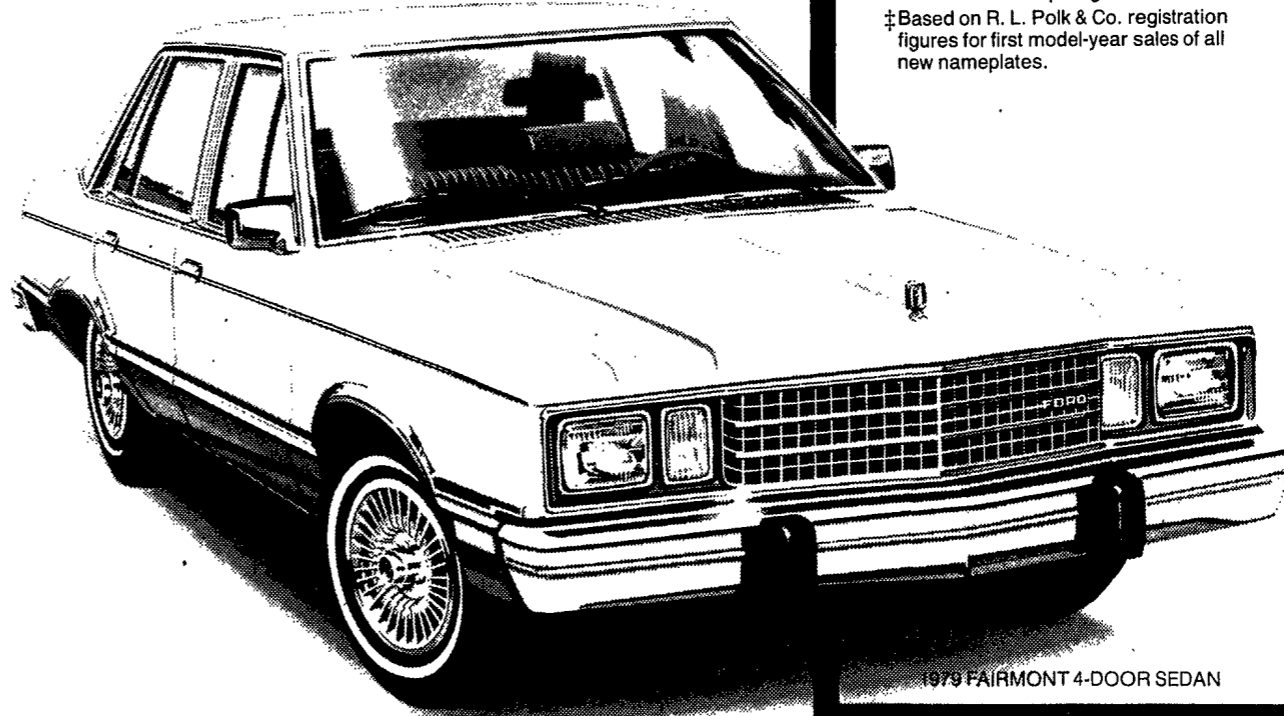


**STUDENTS IN REHEARSAL**-The cast of Anton Chekov's "A Marriage Proposal," one of nine one-act plays being presented by students in the drama area at State University College at Potsdam this week, is shown in rehearsal. Pictured left to right are Steven Quackenbush (Lomov), Melody Pierce (Natalya) and David Frasca (Chubukov). The play is under

the direction of students Joseph Eggsware and Bonnie Brickner and will be presented at 7:30 p.m. on March 1, and March 4, in the College Theater. Other plays will be presented throughout the week. Further information and reservations are available by calling 268-3740.

Before you buy any mid-size car, get the facts.

# The Facts Favor Ford:



1979 FAIRMONT 4-DOOR SEDAN

## 1979 FORD FAIRMONT

- THE MOST ROOM FOR THE MONEY OF ANY CAR.\*
- LOWEST STICKER PRICE OF ANY MID-SIZE CAR.\*\*
- UNSURPASSED MILEAGE ESTIMATES IN ITS FIELD (AUTOMATIC TRANSMISSION)‡
- MOST SUCCESSFUL NEW CAR NAMEPLATE EVER INTRODUCED.‡

\*Based on a comparison of EPA interior volume index and sticker prices.

\*\*Based on a comparison of sticker prices.

‡20 MPG EPA estimate. Compare this estimate to the estimated MPG of other cars. You may get different mileage depending on how fast you drive, weather conditions and trip length.

‡Based on R. L. Polk & Co. registration figures for first model-year sales of all new nameplates.

Now you've got the facts, we know you'll favor Ford Fairmont, too. So come on down to your Ford Dealer and try Fairmont's comfort and roominess features on for size. If the car fits, drive it home. We can fit you with a deal you won't want to refuse!

# And the deal cinches it!

# See your Ford Dealer.

