

## Stockholm Will Abandon Certain Unused Roads

STOCKHOLM—In an effort to cut down on future highway expenses, the Town of Stockholm has initiated legal proceedings designed to allow abandonment of some of the unused roads in the town.

A report on the current status of the effort was aired at the recent Stockholm Town Board meeting.

Under Section 205 of the New York State High Law, every highway that has not been traveled or used as a highway

for six years ceases to be a highway and is deemed abandoned right-of-way.

In other action, the town board passed a resolution that there will be no "Children at Play" signs in the Town of Stockholm. Any existing signs will be removed in a "reasonable" amount of time. On the subject of signs, it was announced that curve signs will be placed on the Mahoney Road.

Also, a recommendation was made that there be a monthly maintenance

check on highway equipment, in order to keep it in better working condition.

David Gebo, superintendent of highways for the town, reported that the construction on the Pearl Bridge Road has been completed under the Donovan Plan. Next, highway crews will apply oil to the West Stockholm-Knapps Station Road, from Arquette's Superette to Blair's Body Shop.

Also, the Brookdale Road will be rebuilt and paved by the St. Lawrence County Highway Department. The county will also undertake resealing, applying new gravel and oil, of the Southville Road. That work came from Legislator Augustus Marscher.

The town board will advertise for bids for 200 tons of salt for highway use in the winter season. Bids will be opened on Sept. 12 at 3 p.m. in the Municipal Building, Winthrop.

In other business, the board accepted the resignation of Robert Compo from the planning board.

Kermit Dyke was reappointed custodian of the voting machines.

Supervisor Edward Tanner was appointed budget officers for the 1979 budget.

The board authorized the payment of monthly bills, which included a \$2,900 repair to a bulldozer.

The next regular meeting of the town board will be held at 6:30 p.m. Sept. 12 at the Municipal Building, Winthrop.

## Beginners

SHELLY, RENEE HEATHER, born July 31, 1978 to Peter Richard and Patricia Ann Clark Shelly, Box 244, Hannawa Falls.

YEARWOOD, JOSEPHINE LORRAINE, born July 31, 1978 to John Charles and Stephenie Ann O'Brien Yearwood, 9 College Street, Canton.

MARONEY, ANGEL MARIE, born August 2, 1978 to Milton Thomas and Dorothy Louise Foster Maroney, Route 4, Potsdam.

FISHEL, ALISON MARLONA, born August 3, 1978 to Thomas Wayne and Marlene Jan Heimerman Fishel, Black Lake Rd., Rt. 1, Hammond.

OROLOGIO, TRACEY LYNN, born August 4, 1978 to William Robert and Martha Jane Dunn Orologio, Route 1, River Rd., Norwood.

STONE, TODD CHRISTOPHER, born August 4, 1978 to Thomas Bruce and Diane Marie Hall Stone, Route 4, Keener Rd., Potsdam.

## Income Criteria For Reduced Price And Free School Lunches

The Potsdam Central School Board of Education recently adopted the New York State 1978-79 Family Eligibility Criteria for Free and Reduced Price Meals and Free Milk. The specific criteria are listed below:

### NEW YORK STATE 1978-79 FAMILY ELIGIBILITY CRITERIA FOR FREE AND REDUCED PRICE MEALS AND FREE MILK GROSS INCOME

Number in Family Unit	Free Lunch and-or Breakfast and-or Special Milk		Reduced Price Lunch and-or Breakfast	
	Annual	Monthly Weekly	Annual	Monthly Weekly
1	\$4,190	\$349	\$6,530	\$544
2	5,500	458	8,580	715
3	6,810	568	10,630	896
4	8,120	678	12,680	1,065
5	9,430	778	14,530	1,211
6	10,510	878	16,400	1,367
7	11,600	978	18,100	1,508
8	12,690	1,058	19,790	1,649
9	13,680	1,140	21,330	1,778
10	14,660	1,222	22,870	1,906
11	15,640	1,303	24,390	2,033
12	16,610	1,384	25,910	2,159
Each Additional Member	970	81	1,520	127

"Family" means a group of related or non-related individuals, who are not residents of an institution or boarding school, but who are living as one economic unit. This includes son, daughter, relatives, etc.

"Income" means all sources of earned or unearned monies before deductions for income taxes, insurance premiums, bonds, alimony, child support, etc. which would be available to the "family" to pay the price of a child's meal.

"Hardship deduction"—"Family income" can be reduced by the value of the following expenses which you may have had to pay: Medical expense payments above \$50 per family member per year; Shelter costs above 30 percent of your "Income"; Education expenses due to a child's physical or mental condition; and Disaster or Casualty losses. (See reverse for interpretation).

"Foster Children"—a foster child placed in a private residence, where adoption is not involved, would be eligible under the criteria for a family of one, if the income for that child does not exceed the applicable Family Income Scale. This provision is an effect regardless of the gross income of the foster parent.

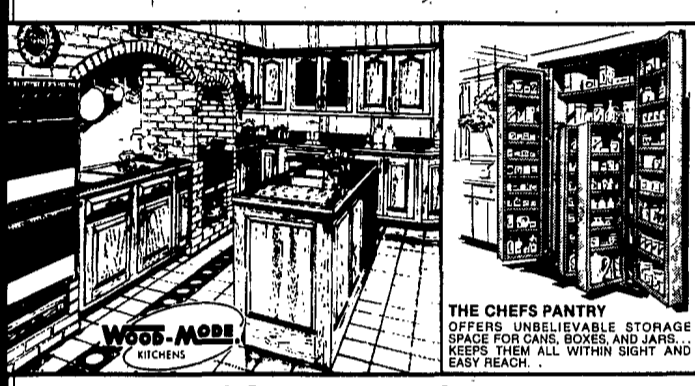
From Tampa Florida

## The Sensational Benny Goodman of the South

**ALEX MACAR**

(formerly with **Jarvis**, **Johnny Johnson**, one of the Country's finest **Charley** saxophone artists; and his music featuring song stylist—the lovely **Evelyn Macar**, for an evening you'll never forget at the fabulous Crossroads, Moirs - nightly. Hear the finest dance music you have ever heard. No cover or min. A sensation last year when they were here - wait till you hear them now! Even with real entertainment like this Gourmet dinner with everything from appetizers to Beverage still from \$4.95.

## 14th ANNUAL WOOD-MODE CABINETRY SUMMER SALE



**Authorized Once-A-Year Savings Event Extended thru Aug. 31...Save up to 25%**

**BEAT RISING COSTS**  
Act now...SAVE MORE MONEY DURING OUR 14th ANNUAL AUTHORIZED SUMMER SALE than any other time of the year. Now you can afford the prestige of a custom designed and custom built handrubbed Wood-Mode kitchen. THE GREATEST DOLLAR FOR DOLLAR VALUE ON THE MARKET! Wood-Mode planned storage cabinets for every room in the home are on sale too!

**PROFESSIONAL DESIGN STAFF**  
Our professional WOOD-MODE designers will prepare accurate perspective drawings, blueprints, tasteful color schemes of your kitchen. They are adept at incorporating space age appliances, plus the latest design ideas into your kitchen. Our expert, skilled craftsmen will do the entire kitchen installation, or we will provide through your builder, contractor, or architect, the design and equipment for your new home or remodeled kitchen.

Bank budget terms if you wish.

Visit our "Showroom of Kitchens"...let's discuss a Wood-Mode original for you.

**D.L. THOMAS**  
KITCHENS & BATHS  
Outer Market St. Potsdam, N.Y. 265-7340

## Lyons Named To National Post

CANTON—Edwin J. Lyons, president of The St. Lawrence National Bank, has been named to the Governing Council of the American Bankers Association for a two-year term, effective in October of this year.

The American Bankers Association is an organization representing approximately 13,600 banks across the nation, about 93 percent of all of the banks in the United States. The association sponsors, as well as its annual convention, 12 national schools, several regional seminars and workshops, and more than 1,200 courses and other educational activities through the American Institute of Banking. Class enrollments average 155,000 annually.

The Governing Council is comprised of about 150 members, elected by states for two-year terms; members appointed by the ABA President; and ex officio

members. The council acts as an advisory body to the board of directors, makes recommendations to the board, and oversees the functioning of the association and its staff of over 300.

A native of Larchmont, N.Y., a graduate of St. Lawrence University, and a resident of Canton, Lyons has been associated with the St. Lawrence National Bank since 1957. He is currently serving as second vice president of the New York State Bankers Association, and is a member of that group's Governing Council also. He served as chairman of the NYSBA Group IV in 1975. He is a director of the New York Business Development Corporation and the St. Lawrence County Chamber of Commerce, and is treasurer of the St. Lawrence County Economic Development Council, Inc.

## SPECIAL OFFER

TO INTRODUCE YOU TO 1979 RCA SELECTAVISION

**SAVE \$200**  
on an RCA B&W video camera when you buy a new RCA SelectaVision 4-hour video cassette recorder VCT200

- Record the program you're watching—up to four hours on a single cassette.
- Record one program while you watch another.
- Record while you're asleep or away with built-in digital clock/timer.
- Record your own home movies with the optional video camera.
- Remote Pause Control for chairside editing.
- Included: 2-hour RCA video tape cassette at no extra charge.

Caution: The unauthorized recording of television programs and other materials may infringe the rights of others.

SelectaVision VCR	\$999
Video Camera	\$299
Regular Combination Price	\$1298
Savings on Camera	\$200
<b>SPECIAL COMBINATION PRICE</b>	<b>\$1098</b>

**RAY BOTHWELL INC.**  
Armstrong Corners West Stockholm 265-9230



## Take an Alcoa's Word... AMERICA NEEDS ALUMINUM

...to help transport people and products. Light and insulate homes. Protect and cook food. And do a thousand other chores, big and small, that Americans do.

Danny Henry, Senior Unit Supervisor-Transportation at Alcoa's Massena Operations, helps produce this metal Americans need. Danny can tell you that aluminum brings more to life — makes it better. And that aluminum saves energy because it can be recycled over and over again — saving 95 percent of the energy it takes to make the metal from ore — with no loss of quality.

Danny and the 2,300 other Alcoans at Massena Operations say America needs aluminum for the quality and convenience it brings to people today. And the energy it saves for tomorrow. At Alcoa we can't wait for tomorrow.

**ALCOA**