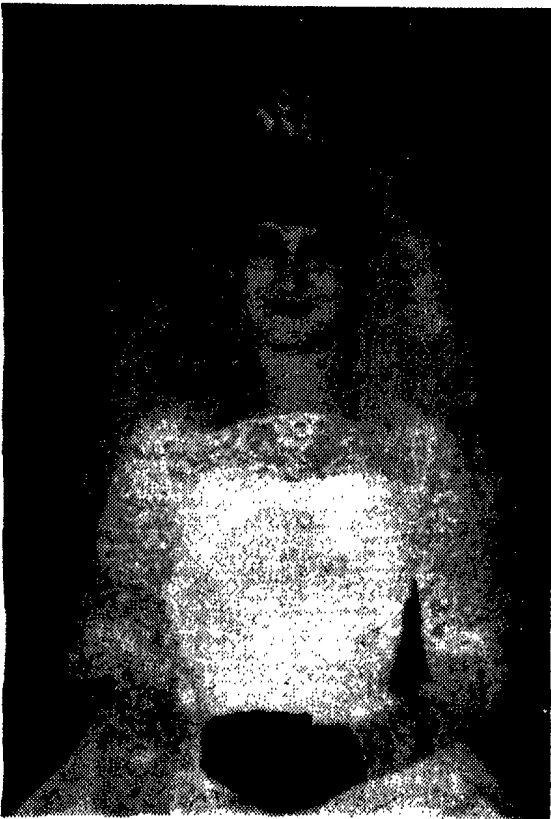


Reverend Caldwell Officiates

The Rev. William Caldwell officiated at the Sept. 9 wedding of Miss Carole Jean Trimm, daughter of Mrs. Lloyd Shattuck of Route 4, Potsdam and Leonard Trimm of Niagara Falls, and Richard Thomas Bradley son of Mr. and Mrs. Thomas Bradley, also of Route 4, Potsdam.

Given in marriage by her step-father Lloyd Shattuck, the bride wore a floor-length gown of chiffon over tulle with a pointed waistline and an insert of tiered chantilly lace trimmed with scalloped chantilly and a bodice of chantilly lace over satin with a scalloped neckline trimmed with seed pearls and sequins and long tapered sleeves of chantilly lace over tulle.

Her train was nine feet of tiered chantilly lace over satin and tulle fastened to the top of her gown with two bows



MRS. HAROLD PICKERING, JR.

Newton Falls Girl Married Sept. 2

Newton Falls—St. Anthony's Church in Newton Falls was the scene of the Sept. 2 wedding of Miss Nancy Sullivan, daughter of Mr. and Mrs. John B. Sullivan, and Harold Pickering, Jr., son of Mr. and Mrs. Harold Pickering, Sr. of Newton Falls.

The Rev. Mr. Dowd officiated at the 11 a.m. double-ring ceremony before an altar decorated with a center bouquet.

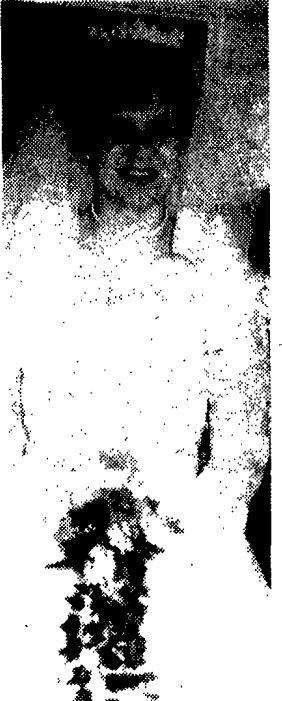
Given in marriage by her father, the bride wore a white satin floor length gown with lace front and a detachable train. Her crown veil was of medium length. She carried white roses.

Miss Linda Pickering, sister of the groom, was maid of honor. She wore a light blue satin dress with jacket. Bridesmaids were Diane Kerr of Star Lake and Sandy Mary, and Patty Sullivan of Newton Falls, sisters of the bride. Miss Shirley Ann Sullivan was flower girl. Daniel Towne of Newton Falls was best man. Ushers were Robert Provost, Robert Cassell, Bruce Sullivan, and Thomas Akey. Donald Sullivan was ring bearer.

For her daughter's wedding Mrs. Sullivan chose a red suit with black trim and black accessories. Mrs. Pickering wore an aqua dress and coat.

A reception was held at the American Legion Hall in Star Lake.

QUEBEC MAN CHARGED
Pierrex J. Clerc, 34, of Quebec, a Clarkson student, was arrested by Potsdam Village Police on two charges of speeding and passing in a no passing zone on Market St. yesterday. He still faces arraignment on the charge.



MRS. THOMAS BRADLEY

of chiffon and tulle. Her fingertip veil was fastened to the crown with a tiara of seed pearls and trimmed with scalloped chantilly lace. She

(See Rev. Caldwell, Page 22)



MRS. FRANK BINOTTO

Miss DeCarr Wed At St. Charles' Altar

Dover Plains—St. Charles Borromeo Church in Dover Plains was the scene of the Sept. 2 wedding of Miss Irene Louisa DeCarr, a graduate of Parishville-Hopkinton Central School now living in Dover Plains, and Frank Binotto, also of Dover Plains. The former Miss DeCarr is the daughter of Mr. and Mrs. Ira DeCarr. The groom is the son of Mrs. Eida Smith.

The Rev. Mr. Lane officiated at the 11 a.m. ceremony. Given in marriage by her father, the bride wore an original formal gown of Pointe D'Estrait lace over silk taffeta. The gown had an empire scalloped waistline with a fitted bodice and a scalloped high neckline. Long lace tapered sleeves ended with lilly points, and the lace skirt was A-line with scallops.

Her detachable cathedral train was of English tulle and scalloped lace. The English tulle bouffant veil was held in place by her wedding crown of iridescent beads and pearls. She carried white carnations.

Mrs. Suzanne Tupper of Potsdam was maid of honor. Bridesmaids were Miss Marcia DeCarr of Potsdam, Mrs. Lucetta Wilcox of Parishville, Mrs. Lind Laundry and Miss Rose Marie Binotto of Dover Plains. They wore floor length gowns styled with white alencon lace, fitted bodices with scooped necklines, and no sleeves. Their silk chiffon sheath skirts of maize and hint green were banded with matching silk satin with bows

Girl Scout Activities

The training team for the new "Design for Learning" for the Thousand Islands Girl Scout Council, Inc. has been announced by Mrs. John A. Kennedy, council president. The three member team will work under the direction of Mrs. James H. Austin, 262 Elm St., Watertown, field adviser for Lewis and Jefferson County, to launch a new kind of training for Girl Scout leaders. The "Design for Learning," which grew out of a three-year study authorized by Girl Scouts of the U.S.A., is a plan for helping leaders to teach themselves and to take responsibility with guidance for their own development as leaders.

Named to the training team which will work with Girl Scout leaders on the pilot project in the Thousand Island Girl Scout council are Mrs. Robert C. Lawrence, 1403 Washington St., Watertown, a girl scout volunteer for nine years, a council trainer and chairman of Clinton Neighborhood, and Mrs. James L. Fisher, Madrid, field adviser for St. Lawrence County. Approximately 90 leaders in the 14 neighborhoods of the Thousand Islands Girl Scout council will participate in the "Design for Learning" this year. The council extends throughout St. Lawrence, Jefferson and Lewis counties and includes a membership of 5000 girls and 1400 adults.

CEYLON FOSTER CHARGED
Ceylon E. Foster, 19, of Route 2, Potsdam was charged by Potsdam Village Police with driving with inadequate tail lights on Leroy St. last Thursday. He still faces arraignment on the charge.

make your move



The 1968
Chryslers
are here.

The 1968 Chryslers are all new, 5 series wide, 15 models deep. With no small versions. New Yorker—our most luxurious Chrysler. With new options like an 8-track stereo tape system and automatic air conditioning. Town & Country—the most sophisticated wagon series around. With new optional rear window wiper/washer concealed in the tail gate. And optional all-vinyl 3-in-1 divided front seat with passenger recliner. 300—the latest version of the sports-brad Chrysler. Concealed headlights and a big 440

CHRYSLER CHRYSLER
Watch the Bob Hope Show and AFL Football on NBC-TV. Chrysler 300 Convertible

cubic inch V-8 are standard. Newport Custom—with all the basic Chrysler luxuries. And a list of over 50 tailored-to-you options. Newport—our easiest-to-own Chrysler. With more luxurious interiors. And a higher output 383 cubic inch V-8. New Yorker to Newport, we've got you covered 15 ways. With the kind of luxury that could only come from Chrysler. And does. This year, make your move. And make it big. Make it Chrysler.

MOVE UP TO CHRYSLER '68

COURTESY CHRYSLER, INC. 185 Market St. Potsdam, N. Y.

Belyea-Cameron Nuptials

The Rev. J. Rodger McGuinness, pastor of St. Mary's Church, officiated at the wedding August 19th of Miss Deborah Ann Belyea, daughter of Mr. and Mrs. Robert J. Belyea, Parishville Road, and Bruce James Cameron, son of Mr and Mrs. Cleveland Cameron, Hannawa Falls.

Traditional wedding music was played by Mrs. Victor Minotti, organist. The Church was decorated with fan arrangements of white gladioli and jade leaves.

Given in marriage by her father, the bride wore a gown of silk organza and Alencon

lace designed with an empire bodice, bateau neckline and Bishop sleeves. The A-line skirt was accented with a detachable court train. The bouffant veil of silk illusion was attached to a princess crown of tulle petals and seed pearls. She carried a bouquet of white carnations, lilies of the valley and trailing ivy.

Miss Catherine Connelly of Potsdam was maid of honor. The bridesmaids, cousins of the bride, were Miss Mary Ellen Walsh of Norwood and Miss Diana White, Knoxville, Tenn. Their gowns and veils were styled similar to the

brides in Nile green linen and silk and they carried bouquets of green and white Fuji mums and carnations.

William Dailey, Norwood, was best man. Ushers were Mr. Clark Warner of Norfolk and Steve Cameron, brother of the groom.

Following a reception at the Sunset Lodge, Norwood, the couple left for a trip to Cape Cod. They will make their home in Potsdam where the bride is employed by Carey's Jewelry Store and the groom is a member of the Junior High School faculty.

Sears

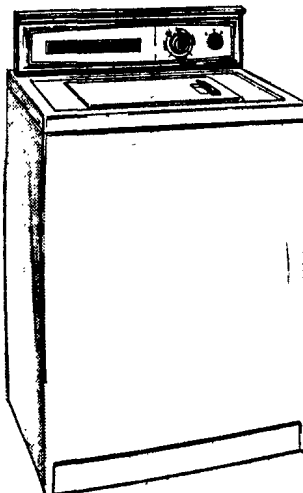
81st
Anniversary
Celebration

Sears, Roebuck
And Co.

Seaway Shopping Center
POTSDAM, NEW YORK

THE TIME
TO BUY
AND
REALLY SAVE

3 BIG
DAYS!



SEE HOW LITTLE YOU PAY FOR A FULL SIZE AUTOMATIC WASHER with 3 wash - rinse temperatures, built in lint filter. Choose hot, warm or cold wash, any wash time up to 14 minutes.

\$148

Fantastic One Only Buy
WASHER AND DRYER PAIR \$275

WASHER - 6 cycle - 2 speed - Adjustable water level control. Bleach dispenser - self cleaning filter.

DRYER - Soft heat - Air freshener unit - Top mounted lint screen.

Fully Guaranteed

KENMORE WRINGER WASHER 88.00

Full width release bar - 8 wringer positions.

15 CU. FT. CHEST FREEZER 159.00

Holds 525 lbs. of frozen food. Separate fast freeze compartment, easy open lid, magnetic gasket. Flush hinges, cold control, interior light. One Only

TWO-OVEN KENMORE CLASSIC GAS RANGE 277.00

Separately controlled automatic ovens. Bake in the upper while you cook a roast in the lower.

SELF CLEANING ELECTRIC RANGE 279.00

Completely automatic oven. Leave for the day - come home to a cooked meal. When it comes to cleaning, just set the controls, lock the door and put electricity to work. 30 inch.

30 in. KENMORE GAS RANGE 168.00

Visit bake oven door removable for easy cleaning. Electric clock timer, lighted glass panel back guard.

PORTABLE ELECTRIC HUMIDIFIER 99.00

No installation required. Adds up to 23.3 gals. of moisture per 24 hours. One Only

KENMORE '400' AUTO. PORT. DISHWASHER 175.00

With exclusive "Roto Rack". Two level wash assures cleanest dishes. Front loading, fully automatic.

GAS HOT WATER HEATER 58.00

40 gal. capacity. 15 yr. guarantee on glass lined tank. Regular \$79.98 Now

CONSOLETTA COLOR T.V. 338.00

21,000 volt chassis. Removable legs for use as a table model.

PORTABLE B & W T.V. 79.00

High impact case. Perfect for that second T.V.

NO DOWN PAYMENT ON SEARS CREDIT PLAN

Open Friday Eve. Til 9 Ph. 265-7100 Toll Free Canton 388-8577