

# LOBLAWS

Blue Bonnet  
YELLOW-QUIK  
**MARGARINE**  
1 lb. print **29<sup>c</sup>**

Brookfield Grade "A"  
Fresh EGGS  
Large Mixed **55<sup>c</sup>** doz.

Grapefruit Juice Edgemoor 46-oz. **19<sup>c</sup>**  
Cereals Kellogg's Corn Pops or Pop, 8-oz., or Post's Sugar Crisp 5c off reg. price lb. **89<sup>c</sup>**  
Maxwell House Coffee Salerno Jack Frost 2 1/2 lbs. **25<sup>c</sup>**  
Fresh Cookies Burnett's Prepared Pudding 2 pkgs. **25<sup>c</sup>**

Libby's  
SWEET GREEN  
**PEAS**  
No. 303 can **16<sup>c</sup>**

SAVE WITH  
**J.N. GREEN STAMPS**  
at LOBLAWS

Heinz Tomato Ketchup 2 1/4-oz. **45<sup>c</sup>**  
Armour's Beef Stew lb. tin **47<sup>c</sup>**  
Tuna Flakes Quik Snac No. 1/2 can **23<sup>c</sup>**  
Anglo Corned Beef 12-oz. tin **49<sup>c</sup>**  
Pink Salmon Pink Beauty or Clear Rapids lb. tin **47<sup>c</sup>**

Pure Cane  
**SUGAR**  
10 lb. bag **99<sup>c</sup>**

Orchard Park Whipped  
SALAD DRESSING  
qt. jar **45<sup>c</sup>**

Hellman's Mayonnaise Blue Ribbon qt. jar **65<sup>c</sup>**  
Olives-on-a-Tree Exello 3 1/4-oz. **29<sup>c</sup>**  
Realprune Prune Juice 24-oz. **28<sup>c</sup>**  
Del-Rich Margarine E-Z Color Pak lb. **29<sup>c</sup>**  
Bisquick For Shortcakes 20-oz. **27<sup>c</sup>**

Ontario  
TOWN HOUSE  
**CRACKERS**  
lb. pkg. **35<sup>c</sup>**

Orchard Park  
TOMATO CATSUP  
14-oz. **19<sup>c</sup>**

Swiss Cheese Rindless No Waste lb. **79<sup>c</sup>**  
Cream Cheese Fairmont 8-oz. **15<sup>c</sup>**  
Elbow Macaroni Mueller's lb. **19<sup>c</sup>**  
Krispy Crackers Sunshine lb. **25<sup>c</sup>**  
Peanut Butter Orchard Park 1 1/2-lb. jar **59<sup>c</sup>**

Commodore  
FACIAL  
**TISSUES**  
2 boxes of 400 **49<sup>c</sup>**

Wilson's Canned Meats  
CORNED BEEF 12-oz. tin **49<sup>c</sup>**  
HAM SALAD 8-oz. tin **31<sup>c</sup>**

Park Club Beverages Deposit Extra 2 29-oz. **21<sup>c</sup>**  
Ice Cream Cones Safe-T Home Pak pkg. **28<sup>c</sup>**  
Paper Cups Dixie Hot or Cold 2 pkgs. **25<sup>c</sup>**

Extra Large, Crisp Solid Heads  
**ICEBERG LETTUCE**  
SIZE 48's

**2 FOR 25<sup>c</sup>**



Plump Full Ears, Fancy  
FLORIDA GOLDEN  
**Sweet CORN**  
5 ears **35<sup>c</sup>**

Very Sweet, Good Size, Juicy  
CALIFORNIA VALENCIA  
**ORANGES**  
5 lb. mesh bag **39<sup>c</sup>**

Extra Large Size California  
**FRESH GRAPEFRUIT** 3 Size 64's **29<sup>c</sup>**  
Fancy Eating, California  
**SWEET CHERRIES** lb. **39<sup>c</sup>**  
Fresh, Solid Green Heads  
**NEW CABBAGE** lb. **9<sup>c</sup>**  
Very Fancy Southern  
**YELLOW SQUASH** 2 lb. **25<sup>c</sup>**  
Large Size, Fancy Florida  
**FRESH LIMES** doz. **25<sup>c</sup>**  
Firm Red Ripe Southern  
**Slicing TOMATOES** tube **19<sup>c</sup>**  
Clean, Washed, Long Tender  
**Loose CARROTS** 2 lb. **19<sup>c</sup>**

LOBLAWS SLICED WHITE DATED FRESH BREAD Your Health Packed Loaf 2 1/2 loaves **29<sup>c</sup>**

NEW Libby's  
FROZEN SLICED  
**STRAWBERRIES**  
10 1/2-OZ. TIN **25<sup>c</sup>**

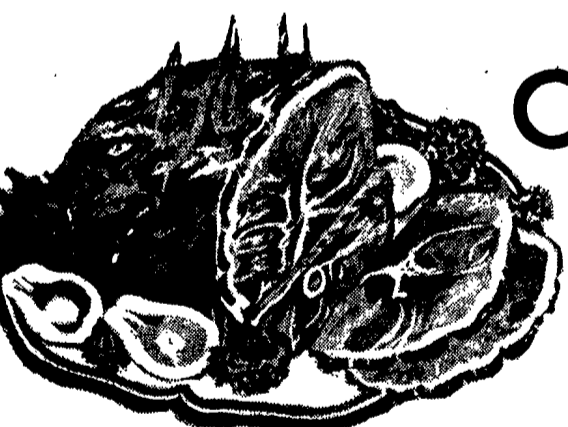
They're delicious, and so handy in the tin. Take several cans on picnics... they take about 3 hours to defrost at average room temperatures. Can be defrosted quickly by immersing can in warm water. Excellent savings at this low Loblaws price. Buy several cans and enjoy fresh tasting strawberries over ice cream, cakes, puddings and for shortcake.

Famous FROZEN FOODS  
Snow Crop Frozen  
French Fried POTATOES  
9-oz. pkg. **23<sup>c</sup>**

Frozen ORANGE JUICE Orchard Park 2 4-oz. **25<sup>c</sup>**  
Frozen ORANGEADE Snow Crop 2 4-oz. **35<sup>c</sup>**  
Frozen LIMEADE Snow Crop 2 4-oz. **35<sup>c</sup>**

RICE HONNIES Ranger Joe pkg. 16c  
CLEANED SHRIMP Gulf Kist 4 1/2-oz. **59<sup>c</sup>**  
POMPEIAN OLIVE OIL 2-oz. **13c**  
LIVERWURST Stahl Meyer 4 1/2-oz. **21c**  
MY-T-FINE Lemon Pie Filling 2 pkgs. **17c**

GLORIA MACARONI 3 lb. **53c**  
OLD DUTCH CLEANSER 2 1/4-oz. **25c**  
Blu-White Buy 3 reg. price 4 pkgs. **30c** get one for 1c  
101 BLEACH qt. **18c**  
LOBLAW AMMONIA qt. **15c**



Morrell's E-Z Cut  
**Cooked HAMs**  
WHOLE or FULL SHANK HALF **67<sup>c</sup>** lb.

Loblaws Fresh Regular  
**GROUND BEEF**  
lb. **65<sup>c</sup>**

Armour's Star and Swift's Premium  
**Smoked HAMs** whole or full shank half **59<sup>c</sup>**

Swift's Premium and Oscar Mayer  
**Smoked Cottage BUTTS** 1 1/4 to 2 1/4 lb. average lb. **83<sup>c</sup>**

Morrell's Yorkshire  
**Sliced BACON** lb. **53<sup>c</sup>**

Farm Fresh, Ready To Cook  
**Frying CHICKENS** lb. **55<sup>c</sup>**

Ready To Cook  
**Plump FOWL** lb. **59<sup>c</sup>**

Delicious 4% cream  
**Cottage CHEESE** lb. **19<sup>c</sup>**

FISH FEATURES

ALICED RED SALMON lb. **59<sup>c</sup>**  
FILLETS OF HADDOCK lb. **39<sup>c</sup>**  
JUMBO FRESH SHRIMP lb. **69<sup>c</sup>**  
FILLETS OF CODFISH lb. **39<sup>c</sup>**  
FILLETS OF RED PERCH lb. **39<sup>c</sup>**  
FILLETS OF WHITING lb. **29<sup>c</sup>**

Toilet Soap  
**PALMOLIVE** 3 reg. size bars **23<sup>c</sup>**

PIGS' FEET 14-oz. **35c**  
ROAST BEEF 12-oz. tin **53c**  
CORNED BEEF HASH lb. **37c**

Waldorf Toilet Tissue 3 rolls **25<sup>c</sup>**  
Bon Ami Cleanser 2 ctas. **25<sup>c</sup>**  
Lux Toilet Soap Bath Size 2 bars **23<sup>c</sup>**

Xpert  
**CAKE MIXES**  
Chocolate, Gold or White  
pkg. **25<sup>c</sup>**

Armour's  
**PURE LARD**  
3 lb. tin **65<sup>c</sup>**

Durkee's Grade "AA"  
**MARGARINE**  
lb. **27<sup>c</sup>**

French's Horseradish  
**MUSTARD**  
6-oz. jar **9<sup>c</sup>**

Lipton's Black  
**TEA BAGS**  
48 in a pkg. **58<sup>c</sup>**  
1/2 lb. pkg. Black Tea 68c

Breast O' Chicken  
**TUNA FISH**  
solid pack No. 1/2 can **38<sup>c</sup>**

Dailey's  
**DILL PICKLES**  
Home Style Kosher 31<sup>c</sup> 22-oz. jar

Clapp's  
**BABY FOODS**  
Chopped jar **15<sup>c</sup>** Strained jar **10<sup>c</sup>**

For Cooking or Salads  
**WESSON OIL**  
pint **31<sup>c</sup>** quart **59<sup>c</sup>**

Hunt Club  
**DOG FOOD**  
5 lb. **73<sup>c</sup>**  
1 lb. pkg. **33c**

Dr. Olding's  
**DOG FOOD**  
lb. tin **10<sup>c</sup>**

Puss 'N Boots  
**CAT FOOD**  
8-oz. tin **9<sup>c</sup>** 15-oz. tin **14<sup>c</sup>**

Glamur Upholstery and  
**RUG CLEANER**  
8-oz. **89<sup>c</sup>**

Sage  
**SAFETY BLEACH**  
pkg. **29<sup>c</sup>**

Toilet Soap  
**SWEETHEART**  
Buy Three at regular price  
Get one for only 1c  
4 bath size **36<sup>c</sup>**

For Dirty Hands  
**LAVA SOAP**  
2 bars **19<sup>c</sup>**

Kirkman's  
**SOAP FLAKES**  
Buy one at Reg. Price  
Get one for Half Price  
2 lbs. **41<sup>c</sup>**

Bath Size  
**DIAL SOAP**  
2 bars **37<sup>c</sup>**

Fabulous Suds  
**FAB**  
2 lbs. **59<sup>c</sup>** giant size **73<sup>c</sup>**