

### BIG REDUCTIONS IN MOTOR PRICES

AVERAGES RANGE FROM 13 TO 42 PER CENT.

The almost constant decline in motor car prices the past 18 months has resulted in reductions on standard makes ranging from 13 per cent to 42 per cent, the average approximating 25 per cent.

Following tabulation of representative makes of touring models shows present prices, and per cent reduction, these figures, of course, not being delivered prices:

Present Reduction	Price
Buick 5-passenger	\$1,305 22%
Cadillac	1,150 20%
Chevrolet "490"	625 36%
Dodge Brothers	880 32%
Essex	1,095 39%
Ford	348 39%
Franklin	2,350 16%
Hudson	1,745 32%
Hupmobile	1,250 25%
Nash "4"	1,390 18%
Oakland	1,145 18%
Overland	695 42%
Packard "6"	2,350 35%
Peerless	2,790 13%
Studebaker Light "6"	1,045 30%

### GOOD TIME TO PLAN GARDEN

During the Long Evenings Consider These Hints Put Out by the Department of Agriculture.

Some plants do better under certain conditions than do others. Where special conditions obtain, it is well to study the requirements of the flowers while plans are being made to plant them, and see if the location in question is a suitable habitat for them.



Ideal Garden Spot.

petunia, Drummond phlox, pink dwarf nasturtium, portulaca and sweet alyssum.

On light fertile soil: Gaillardia, marigold, Drummond phlox and portulaca.

On light soil, not too rich: Cockspur and feather cockscomb. On poor soil: Love-les-bleeding, prince's-feather, Joseph's-coat, Cape marigold, godetia, dwarf nasturtium, portulaca, Scotch pink, sweet alyssum, garden balsam and calliopsis.

On lands near the seacoast: Plants from the three foregoing lists, depending on the fertility of the soil, together with the canton bean, sunflower, heliopsis, spiderflower, cornflower, strawflower, zinnia, calliopsis, snow-on-the-mountain, four-o'clock, stock, calendula, California poppy, petunia and sweet alyssum.

In partial shade: Basketflower, sweet sultan, clarkia, platycodon, godetia, Drummond phlox, pansy, sweet alyssum, lupine and forget-me-not.

Especially responding to rich soil: Castor bean, scarlet sage, balsam and China aster.

Monk Made First Gunpowder. The Chinese were long credited with the invention of gunpowder, but not long ago evidence was adduced to indicate that this is a mistake and that the Arabians did not, as commonly supposed, introduce gunpowder into Europe during the thirteenth and fourteenth centuries, says the Washington Star.

It is believed by the most competent authorities now that the manufacture of the first gunpowder was based upon the "fire" of the Chinese, which appeared in Constantinople about the middle of the thirteenth century. This was the source from which Roger Bacon, Albertus Magnus and Thomas Aquinas derived their knowledge of gunpowder. The first use of gunpowder to drive projectiles is ascribed to a monk, Berthold Schwartz, whose discovery was made accidentally while preparing the mixture for medicinal purposes.

### GIVE EAR TO THE WORD OF DOE

BURG WEATHER PROFIT HAS GLAD TIDINGS OF GREAT JOY.

'Twill be an early spring, tad-dee-dad!

So saith Frank Doe, who saith what mayeth come in the way of weather, premier prophet of Northern New York, sole proprietor of Uncle Sam's only rival, the Northern New York weather bureau at Ogdensburg.

The goose bone lies; the robin is a deceived and deceiving bird and all other prophets are false prophets. Hear ye!

"Oh, boy! Oh, joy! We are going to have an early spring," says Mr. Doe in the latest issue of his semi-annual prediction. Then he explains his return to weather prognostication after his retirement announced last fall.

"Thousands and thousands of inquiries have flooded me from all parts of the Empire State, and they will be stemmed by the glad news.

"We shall have a fine spring, balmy is the word befitting me best here. I should say. And, girls, those lovely Easter hats will not be harmed a bit from overhead conditions whatever. Men, bring out the old Palm Beach suits. Why wait till after Easter to learn what the weather will be that sublime Sunday? Come here! Satisfaction guaranteed or all predictions taken back, as never has been necessary in 32 years of most complete weather charting anywhere.

"It will be the finest spring weather in years. The snowfall has been very heavy in all, and if it had not rained so much at intervals we would have been buried at great depth, as predicted. My prediction of snow, snowblow, blow, has been fulfilled, as always. Not in years have we had such winds. There were many wrecks on the Great Lakes, and ocean steamers had a hard season.

"It will be a hot summer, with plenty of rains. Spring conditions will be fine for crops. The worst storms will be in July and November. Winter will last well into spring, and the old bear's prediction will be borne out. There will be severe storms between now and the middle of March."

### MUCH IDLE LAND TO BE UTILIZED

SOURCES OF SUPPLY OF THE WESTERN MARKETS EXHAUSTED.

(Prepared by the United States Department of Agriculture.) "Reforestation has not been taken seriously by the average business man in the United States," said Col. W. B. Greider, chief of the forest service, United States Department of Agriculture, before the National Association of Wood Turners recently.

"Reforestation has been looked upon as a fast quite remote from the practical interests of the manufacturer, as something many concerned with parks or shade trees or rose bushes.

World's Greatest Lumber Market. "Chicago is the greatest lumber market in the world. Since 1850 an average of over 2,000,000,000 feet of lumber has come into Chicago every year. In 1920 the figure was nearly 2,700,000,000 feet, 30 per cent more than in 1910. In 1920 the average freight paid on lumber coming into Chicago was less than 83 per cent of the freight paid on lumber from other sources of supply for this territory have been exhausted one after another. Lumber shipments have traversed greater and greater distances, and the average freight bill paid by the Chicago distributor has steadily risen to more than \$12 per M. ft."

"In other words, the increased transportation charge on lumber shipments into Chicago, as a result of the exhaustion of the forest regions surrounding it, represents a toll of \$22,500,000 annually. And while this has happened there have accumulated in the Central and Lake states nearly 27,000,000 acres of logged-off forest land which is producing neither farm crops nor timber; \$22,500,000 is the yearly tax which the wood-using industries and some millers, supplied through Chicago, pay for the idleness of a large part of the soil in the surrounding states which should furnish the natural supply for this district. This sum would plant every year 1,200,000 acres of land with forest trees.

"This illustration may be extended to cover the four states of Illinois, Indiana, Wisconsin and Michigan. These states consume annually between

History in a Nutshell. Some time after the school system was adopted by the navy a Filipino was directed to write an essay on George Washington. This, however, was the first contribution, and was as follows:

"George Washington was sore because American persons was not free. He said for England on my ship and set to king. I express debarations of Independence for American persons. King he say 'Nothin' durn' and Mr. Washington toll Admiral Dewie to shoot big guns at him. Binohy King, he say he will not run over American persons again. 'Let George do it,' he say, and today American persons she is free."—Great Lakes Bulletin.

Mechanism of Glaciers. In tunneling through glaciers during the Alpine operations of the war, opportunity was offered for observations of inner structure and movements. In shallow outcrops, characterized only to be expected at much greater depths were found. The alternation of lighter and denser layers could not here be caused by pressure, but must be a primary, sedimentary formation. Interior crevasses often ended in a plane of stratification, thus pointing to the importance of such planes in the glacier mechanism.

Scene in a Forest in the Pacific Northwest. 4,000,000,000 and 5,000,000,000 feet of timber in furniture factories, agricultural implements, wood-turning establishments and other wood-using industries. Sawmills are excluded from this estimate, also the requirements for general construction and housing, and the consumption of lumber on farms. The manufacturers referred to represent an invested capital of \$700,000,000 and employ 200,000 skilled employees.

Rapidly Exhausting Timber Supplies. "We are cutting our timber probably four times as fast as timber is being grown. It is useless to decry the generous use of American industry has made of our forests. It has contributed powerfully to the industrial development and commercial success of our country."

PEOPLE WE MEET. SWAUK! PAPE-SUSSAUS SSSZZZZ SSSNAUK!

FOR forty years Sloan's Liniment has been the quickest relief for neuralgia, sciatica and rheumatism; tired muscles, lame backs, sprains and strains, aches and pains.

Keep Sloan's handy and apply freely, without rubbing, at the first twinge. It eases and brings comfort surely and readily. You'll find it clean and non-skin-staining.

Sloan's Liniment is pain's enemy. Ask your neighbor. At all druggists—35c, 70c, \$1.40.

Sloan's Liniment (Pain's Enemy)

THE HOBBOCK'S Ointment

### SO MANY PEOPLE ARE NERVOUS

"Fruit-a-tives" the Greatest of all Nerve Remedies

Because Made Of Fruit Juices

The increase in the number of persons suffering from Nervousness is world-wide; due, in a measure, to the reaction following the war. Sleeplessness, Headaches, Mental Depression, Rheumatism, Nervous Dyspepsia, Bad Heart Action, are the results of a disturbed condition of the Nervous System.

The nerves and the blood are so intimately, so vitally, connected that the condition of one's health is affected by the condition of the other. If the blood is laden with impurities, it is impossible to have strong, steady nerves.

"Fruit-a-tives" will always cure Nervousness because it is a fruit medicine and acts directly on the organs of the body which purify the blood, thus relieving the nervous system.

It is because "Fruit-a-tives" is a genuine fruit medicine that it stimulates bowels, kidneys and skin and purifies the blood—improves appetite and digestion—insures food being properly digested—thus enabling the blood to carry wholesome nourishment to build up the body, particularly the nerves.

60c a box, 6 for \$2.50, trial size 25c. At dealers or from FRUIT-A-TIVES Limited, OGDENSBURG, N. Y.

Light-Six 5-Pass., 112" W. B., 40-H. P. Chassis..... \$ 875

Special-Six 5-Pass., 119" W. B., 50-H. P. Chassis..... \$1200

Big-Six 7-Pass., 126" W. B., 60-H. P. Chassis..... \$1500

Light-Six 5-Pass., 112" W. B., 40-H. P. Chassis..... \$ 875

Special-Six 5-Pass., 119" W. B., 50-H. P. Chassis..... \$1200

Big-Six 7-Pass., 126" W. B., 60-H. P. Chassis..... \$1500

Light-Six 5-Pass., 112" W. B., 40-H. P. Chassis..... \$ 875

Special-Six 5-Pass., 119" W. B., 50-H. P. Chassis..... \$1200

Big-Six 7-Pass., 126" W. B., 60-H. P. Chassis..... \$1500

Light-Six 5-Pass., 112" W. B., 40-H. P. Chassis..... \$ 875

Special-Six 5-Pass., 119" W. B., 50-H. P. Chassis..... \$1200

Big-Six 7-Pass., 126" W. B., 60-H. P. Chassis..... \$1500

Light-Six 5-Pass., 112" W. B., 40-H. P. Chassis..... \$ 875

Special-Six 5-Pass., 119" W. B., 50-H. P. Chassis..... \$1200

Big-Six 7-Pass., 126" W. B., 60-H. P. Chassis..... \$1500

Light-Six 5-Pass., 112" W. B., 40-H. P. Chassis..... \$ 875

Special-Six 5-Pass., 119" W. B., 50-H. P. Chassis..... \$1200

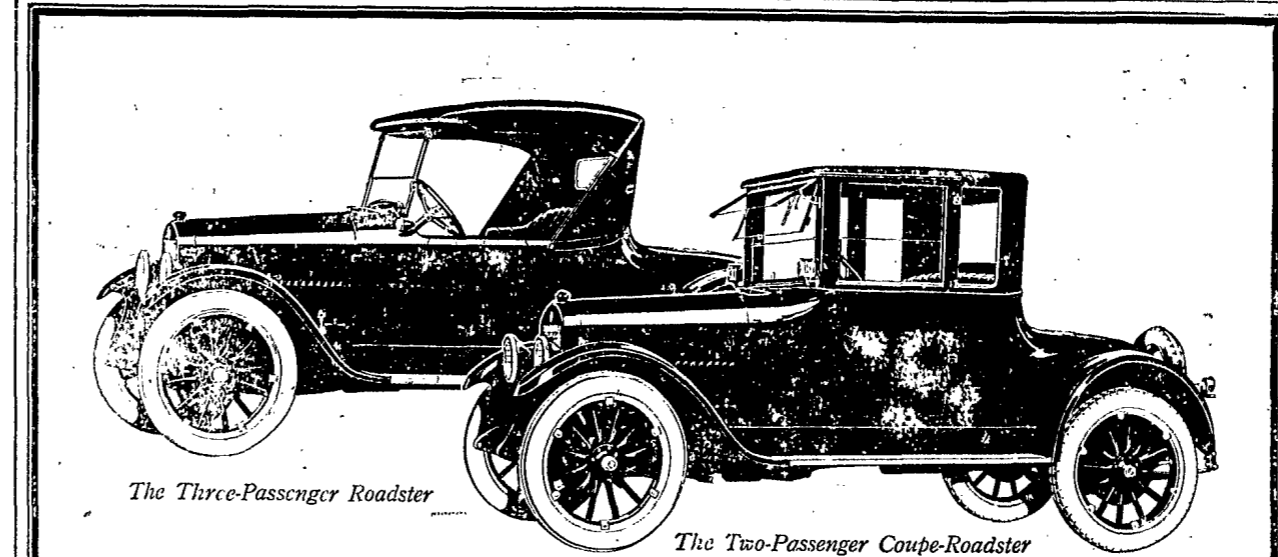
Big-Six 7-Pass., 126" W. B., 60-H. P. Chassis..... \$1500

Light-Six 5-Pass., 112" W. B., 40-H. P. Chassis..... \$ 875

Special-Six 5-Pass., 119" W. B., 50-H. P. Chassis..... \$1200

Big-Six 7-Pass., 126" W. B., 60-H. P. Chassis..... \$1500

Light-Six 5-Pass., 112" W. B., 40-H. P. Chassis..... \$ 875



# Studebaker

## Ideal for Two or Three

Studebaker builds two attractive roadsters, each mounted on the sturdy 40-horsepower LIGHT-SIX Chassis.

Both cars are ideally suited to the requirements of the professional or business man, or the small family.

The open Roadster seats three adults in perfect comfort, with ample room for complete relaxation. The lines of the top harmonize with the graceful body. The wide doors with outside and inside door handles, permit easy entrance and exit. There is ample luggage space under rear deck.

For a convenient, light, easily operated car of great economy, there is no other three-passenger SIX on the market at or anywhere near its price.

The Coupe-Roadster, like the open roadster, is built complete by Studebaker. It is one of the most attractive enclosed cars of the year and, at its price, has no competition. In materials and workmanship it measures up to the highest standards of the industry. Seats two passengers with plenty of leg room.

Interior is upholstered in genuine leather. Windows are raised and lowered by simple automatic device. Equipment includes cowl ventilator, side coach lamps, thief-proof transmission lock, windshield wiper and clock.

You cannot obtain greater intrinsic values at any price.

James G. Lindley  
Potsdam, N. Y.  
This is a Studebaker Year

premise of the timber states forestry problem does not result from the liberal use of our forests, but from our failure to use our forest growing land. There is an ample area of land in this country, which is not tillable, to support all of our timber requirements, all of our wood manufacturers, all of our home building and agricultural use of lumber. Indeed, an even larger export trade than at present, if that land can be kept at work growing timber. Reforestation has become a commercial necessity of the United States."

DEMAND FOR SMALL CAPONS Little Matter of Education Make Fowl of Lighter Breeds Quite Popular.

There is already a considerable demand for small mature capons. A little matter of education will make the capon from the small variety, when fat and well finished, just as popular as the big heavy capon from the larger breeds for the very good and simple reason that the small family often use a five or six-pound capon to better advantage than they can a ten or twelve-pound one.

A Bit of Advice. "Things ripen quickly in a heated atmosphere," says a household writer. That's so—even love. Give your girl plenty of hot air.—Boston Transcript.

The Limit. "Augh—waugh—gr-r!" It was the only, and he had made similar remarks steady, for the last hour. Mr. Newpop's hair—what was left of it—stood on end. "Grow abwh vomdgon, zom-r-r-r!" remarked the baby, lustily, while the people living across the way rose from their beds and closed their windows ostentatiously. Mr. Newpop ground his teeth. "To think," he murmured wearily, "that I should live to become the father of a train announcer!"

Lays Progress to the "Kicker." The reasonable man adapts himself to the world; the unreasonable one persists in trying to adapt the world to himself. Therefore, all progress depends on the unreasonable man.—Bernard Shaw.

Stomach distress goes in five minutes. T. H. Perrin & Co., guarantee, Mi-O-Nu to relieve indigestion or any stomach trouble, or money back.

It's the simplest thing in the world to use Hyomet and end call arch. Breathe the medication thru the little inhaler in every outfit. You will get relief at once. Money back if it fails. T. H. Perrin & Co.

Flour, Feed, Hay, Grain, GOAL

Occident Gold Medal FLOUR Wise King Pansy

ALL GOOD FEEDS AND GRAINS: Scratch Grains, Laying Mash \$2.75 per 100 lbs

Cane Molasses Feeding Moasses, \$25.00 per ton in good Strong Barrels

Lehigh and Scranton Anthracite Coal Soft and Smithing Coal, Hard and Soft Wood

Potsdam Feed & Coal Co., Main Street, Potsdam, New York

Trade at Home where YOUR Interests are.

When you buy from us instead of sending to the catalog house, you see what you buy before you buy it; you get it the day you want it; you have no freight to pay and you get better stuff for less money. That's all.

OUR HARDWARE WEARS

**Weed's Hardware** 49 Market St. Potsdam, N. Y.

See that Beautiful Copper Range in Our Window

ALL THE NEWS OF ST. LAWRENCE CO. IS IN THE COURIER