



Hereafter the basis of adjustment will be:

In Ford sizes, plain tread, 6,000 miles; Kant Slip, 7,500 miles. All other sizes, plain tread, 5,000 miles; Kant Slip tread, 6,000 miles.

The word "adjust" is merely figurative, because in 1914 the total adjustment in Kelly-Springfield Tires for the whole United States was less than 1%. You get this unequalled service in uninterrupted mileage—not adjustment.



Made to Make Good

Before buying some other tire at a lower price analyze the basis of adjustment offered by the other maker—see what you really do get for less money.

Kelly-Springfield
Tires are built up to a standard—not down to a price

H. D. Thompson Co.
Distributor, Malone, N. Y.

For Sale in Potsdam, by the
ISLAND GARAGE

2 BARGAINS 2

Distillers' Grains, - \$24.00
Buffalo Gluten, - \$32.00

This is \$3.00 per ton discount from the regular price

Just received ten cars Iron Clad Cement, one car Lime, and one car Ground Limestone

GIVE US A CALL BEFORE BUYING

M. J. SANFORD

PHONE 101

POTSDAM, N. Y.

HEADQUARTERS

for

SUGAR SUPPLIES

Sap Spouts,
Home-Made Sap Buckets,
Syrup Cans

OUR PRICES ARE THE LOWEST
GIVE US A CALL

Plumbing and Tinsmithing

Frederic A. Weed Hardware Co.
49 MARKET STREET

Cash Hardware Co.
GET THE HABIT

Steel and Iron
a Large and Complete Stock

Wagon Woodwork
Etc., Etc.

PEERLESS WIRE FENCE
AND BARBED WIRE

The Best Bargain in Roofing
Paper You Ever Saw.

Also Tar and Red Rosin Paper

Rope, Forks, Scythes,
Snaths and Rakes

IT PAYS

CHEVROLET MAKES GOOD SHOW

Holds Its Own With High Power Machines in California.

Sanford and Clark, local agents for the Chevrolet, received last week details of that car's performance in the Glendale Road Race at Los Angeles. The following telegram tells the tale: "Chevrolet-Motor Co. of New York 57th St. and 11th Ave., New York:—George Hill, driving Chevrolet Royal Mail, won third place in Glendale road race, defeating Mercer, Isotta, Renault and two Marmons. Threw tire on last lap, finishing on rim, losing him second place. Dusenberg first, time two hours, seven minutes; Dusenberg second, time two hours ten minutes; Chevrolet third, two hours eleven minutes. Length of course one hundred three miles.—R. C. Durant."

The George Hill above referred to was, until quite recently, mechanic for Barney Clark and had an opportunity of watching the performance of a Chevrolet "Royal Mail" in the Los Angeles to Phoenix desert race and became sufficiently interested to buy one for his own use. The price of this car is \$750.

The Chevrolet has repeatedly defeated high priced cars that are noted for speed and endurance. The consistent performance at Brighton Beach on Labor Day when, in the free-for-all ten mile handicap, the Chevrolet defeated the Mercedes, driven by Ralph De Palma should not be forgotten.

The Chevrolet again showed its wonderful staying power at Brighton Beach on Election Day when, in the free-for-all ten mile handicap, both Chevrolet entrants defeated the Mercedes driven by Ralph De Palma.

SAXON ENDURANCE RUN.

No Roads Are Impassable to The Little Car.

W. D. MacMillan, Jr., Saxon dealer in Wilmington, N. C., completed a remarkable endurance run in his Saxon. He left Wilmington at 5 o'clock on the morning of October 2, being accompanied by a friend who was driving a large touring car. Mr. MacMillan arrived in Raleigh, N. C., at 2:10 o'clock. The roads were in such bad condition between these two towns, the driver of the large car was forced to give up the trip.

The route taken by Mr. MacMillan extended from Raleigh to Greensboro through Salisbury to the mountains. The return trip was made via Charlotte, Cheraw and Lumberton, N. C. He covered 3000 miles on this trip and averaged 30 miles to the gallon of gasoline.

In speaking of the trip Mr. MacMillan says: "In coming down the mountain in many places we encountered mud which was not deep. At the time we came over this mountain route no other cars were even attempting this road as it was considered impossible for an automobile to get through. In one particularly bad spot we were obliged to run our Saxon in slow gear for about five miles. Even then the water in the radiator did not boil."

SOME STUDEBAKER STUNTS.

The J. W. Dav's Co., in the hot house cucumber business, Davenport, Iowa, have done 50 per cent more business since they put the Studebaker delivery car into service. It has run 8500 miles on the same set of tires.

O. L. Childs, Studebaker taxi service, Taunton, Mass., ran 6318 miles on one set of tires, spent \$6.46 for repairs, averages 50 miles a day, and the starting motor has never refused to operate.

At Middleboro, Mass., an egg dealer wished to collect his eggs and transfer them to Brockton, Mass., 18 miles away. A Studebaker delivery car was used to do that; 525 dozen eggs were collected and placed loose in a case which contained 50 to 55 dozen. The roads were rough, yet when the car arrived at Brockton, only two out of the 525 dozen were cracked and one broken.

It took two and a half years' of study to develop a machine costing several thousand dollars, that provided a plug punch to give the one-thou and a half inch accuracy demanded in the Studebaker automobile factory.

AN ANCIENT JITNEY.

What One Oakland of 1908 Vintage Is Doing.

Where the word "jitney" came from and how it happened to be applied to a bus, is quite a conundrum. A jitney seems to be any kind of an automobile carrying from two to forty passengers at a low rate of fare and competing with the street cars. The growth of this business is phenomenal. In San Francisco it is said over 1200 are in operation and in Seattle nearly a thousand. The street railway companies in these cities have appealed to the courts, claiming the jitneys are cutting into their daily receipts and making their business unprofitable.

Is it possible that the automobile will supplant the street car? Will people prefer to ride in the open air on soft, upholstered leather seats, rather than stand up in stuffy street cars? The jitney is evidently here to stay, especially where the climate is mild the year around.

The earning capacity of a jitney in a large city is hard to estimate, but here is a concrete example of what a car can do in a small town. E. M. Fellows of Morrison, Ill., owns a five passenger Oakland car, which he uses in livery service. During the County Fair he hauled 1120 passengers in 3 days at 10 cents each, which netted him \$112. No wonder the street car companies are objecting to the jitney if this is a fair example of their earning capacity.

This car has rather a wonderful history. It was purchased from the Oakland Co. in 1908 and was the 17th car which this company turned

out. The frame is made of wood and the engine has but two cylinders. It has been driven 125,000 miles and the actual repair expense for this mileage has been less than \$4.00.

Mr. Fellows says, "There are few people in this town who haven't ridden in this car, and I believe that it has hauled more people than any other car in the State. I had the rear axle out last week and the original gears are as good as new." Never having been repainted, and with the original gears and working parts, the history of this car may dispel any fear that one might have as to the maintenance cost of an automobile and exemplifies the economy of buying a high grade car built by a reliable manufacturer.

In one day, March 5, there were assembled at the Ford Motor Co.'s plant in Detroit and in the 21 assembling branches throughout the country, 1847 cars, which is the record in the company's history. This high mark will not stand very long, according to Ford officials, and a production of 2000 cars or more per day is expected before the month is over.

MILL RESUMES OPERATIONS.

On the night of November 10th, 1914, the plant of the Brooklyn Cooperative Co. at Tupper Lake Junction, was totally destroyed by fire, entailing a loss of \$30,000 and throwing a large force of men out of employment. Despite the rigor of our Adirondack winters, the company determined to rebuild at once and Contractor Alfred J. Villave of that place put a large force of men at work and operations were continued all winter, with the result that the company resumed operations last week. A majority of the employees are married men and the large payroll of the company adds a decided impetus to the financial interests of the town.

SOUTH COLTON.

Thomas Doyle has sold his farm to Michael Gorman and will move to Tupper Lake soon where he will enter business. Mr. Doyle was born and brought up in this vicinity and is highly esteemed.

Rev. S. C. Hill and wife have moved their household goods to their home in Gouverneur where they will reside. This change was made on account of bringing them closer to their evangelistic work which will be in the town of Russell.

Mildred, daughter of Joseph and Ida Robar, is very sick with pneumonia and is being cared for by Dr. Schwartz of Colton.

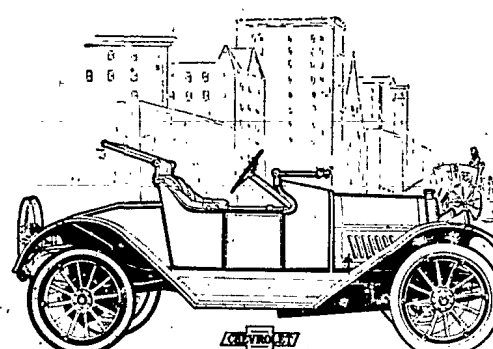
Mrs. Lloyd Olmstead of Allens Falls who has been very sick at the home of her mother Mrs. Weitha Hooton, the past week, is better.

Mrs. Eliza Murphy and Mrs. Frank Foster visited at the home of Mrs. Will Endow last week.

Mrs. George McEbraine left for her home in Fort Covington Monday after spending several weeks caring for her mother Mrs. Walter Williams, whose health has improved.

Rev. Whitman of Potsdam preached his first sermon for the season in the Baptist church last Sunday. Mrs. Whitman and children accompanied him and attended service. There will be services every Sunday hereafter at 3 p. m. Sunday School was organized.

Statement of the ownership, circulation, management, etc., of the Courier and Freeman, published Wednesdays at Potsdam, N. Y. Editor, Ernest A. Fay; business manager, Harry H. Fay; publisher, Elliot Fay & Sons; owners, Ernest A. Fay, Harry H. Fay; known bondholders, mortgages and other security holders, none; signed, Harry H. Fay, business manager; subscribed and sworn to before me this 25th day of March, 1915, F. A. Weed, Notary Public.



CHEVROLET AMESBURY SPECIAL

THE AMESBURY has been designed and built to meet the demand for a classy, up-to-date roadster, with a design of the body along lines followed by foreign body builders and found on no other car at anywhere near the price. The trimming is of green patent leather. The metal trimmings are nickel-plated. The same color scheme of French grey is carried throughout. The top and dust shield is unique, distinctive, practical and serviceable.

Complete with electric lighting and starting system \$985.00

THE ROYAL MAIL ROADSTER. This is a car used by many travelers, can be equipped with large trunk, and is very practical for many uses. Complete, \$860. Remember our FIVE PASSENGER BABY GRAND. "The Product of Experience." There is something distinctively individual about the "Chevrolet Baby Grand." No expense has been spared in the design and materials used. Complete, \$985.00.

Four Hundred and Ninety Dollars

The new 1916 Five Passenger Chevrolet, but Mr. Durant says that we can have them in June at \$490.00. This is a real Automobile, and if desired can be furnished complete with electric lighting and starting system at \$550.00.

If interested at all in Automobiles, please write us for more detailed information, or a demonstration, which we will be pleased to give you.

**R. J. SANFORD,
LEO M. CLARK,**
POTSDAM, N. Y.

Agents for Eastern St. Lawrence County.

MOTORCYCLES

I wish to announce to my old customers and new ones that I have joined hands with the Hodskin Garage, of Canton, N. Y., who will have a full line of

Indian, Excelsior and Henderson Motorcycles

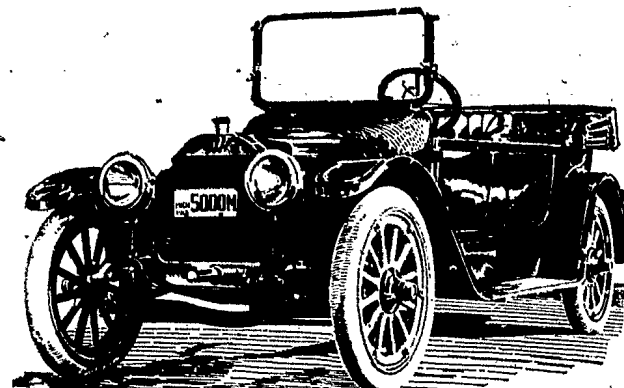
and parts in stock at all times. If you are interested in a new or second-hand machine, call and look them over, or drop us a card, and we will bring anything in the motorcycle line you may wish to see. We have a full line of accessories that are new and up-to-date, at prices that are right. When you need a little work done bring your machine to us and we will give you quick service at reasonable prices, as we have everything in the way of machine tools to do with.

**R. B. THOMPSON
THE HODSKIN GARAGE
CANTON, NEW YORK**

OLDSMOBILE

"THE CAR OF QUALITY"

If you were to look over the Big Six Oldsmobile you would undoubtedly decide you would like to own one like it. But perhaps you would decide you could not afford a \$3,000 car nor afford to operate it if you had it. Now, then, if you were told that the Oldsmobile Light Four was an exact duplicate of the Big Six in material, design and finish, even to the smallest details and the cost of operation was approximately one cent a mile and the price was \$1,285 instead of \$3,000, you would perhaps realize you could own one of these cars of the same luxury and sturdiness as the handsome Big Six, the only difference is in the number of cylinders and length of car. And the difference in price is attractive.



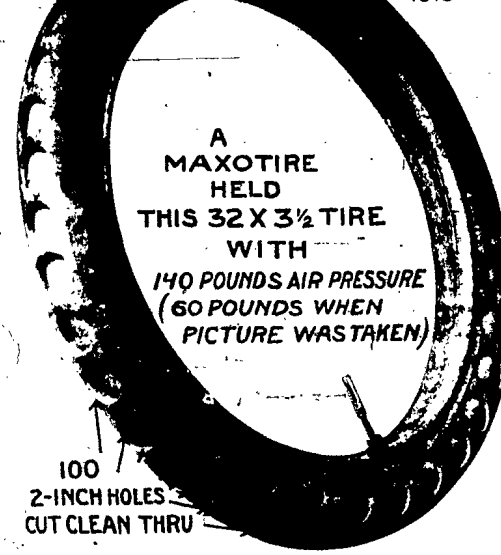
Dr. G. P. LYMAN Dealer for St. Lawrence Co. POTSDAM, N. Y.

The First Successful Inside Tire

MAXOTIRE

The Only Rubber Tread
Tire-Reinforcement

THIS TIRE
EXHIBITED
CHICAGO SHOW
—1915—



A MAXOTIRE HELD
THIS 32 X 3 1/2 TIRE
WITH
140 POUNDS AIR PRESSURE
(60 POUNDS WHEN
PICTURE WAS TAKEN)

100
2-INCH HOLES
CUT CLEAN THRU

GUARANTEED FOR ONE YEAR

Do not buy a Reliner of any kind until

you have seen this one

All (usual) sizes in stock

Fisk Tires and Deffance Tires
GET MY PRICES AND SAVE MONEY

HIGH CLASS ACCESSORIES

Red Head Plugs, 69c	Stewart Horns, \$4.67
Mosler Plugs, 59c	Cementless Patches, doz. 59c
Goggles, 57c up	Tire Dough, 43c
Double Lock Patches, 42c up	Tire Tale, 9c

and all other accessories at reduced prices

H. I. VANNESS, 16 Main Street

Bargains BARGAINS Bargains

The Club Garage

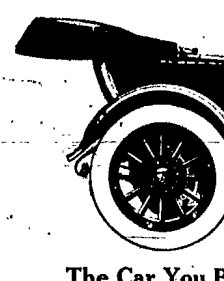
ELM STREET, POTSDAM,

GEO. B. MATHEWS, Prop.

Fully Equipped—COME AND SEE THEM—Good Repair

3—1914 Model T Ford Touring Cars, slightly used.
1—1912 Model T Ford Runabout.
1—1912 Model T Ford Roadster.
1—1908 Model N Runabout, new, carried over.
1—1911 Mitchell Touring Car.
1—1913 Light Truck, capacity one-half ton.

1 New Gasoline Engine, 2 1/4 h. p.
1 New Light Delivery Body with top complete.
Good Horses, Motorcycles and Bicycles, 1 Oliver No. 5 Typewriter, Steel Gasoline Barrels for Gasoline storage, 1 Standard Loose-leaf Ledger Binder No. L6015, size 9 1/2 x 11 7/8.



The Car You E

There are two kinds and the high tension the cheapest. The expensive. It is the Practically all the high tension magnet

Get an
Model 80,
5 Passenger Touring
Model 80, Roadster

F
Local Agent

Ajax T

We Have
TIR

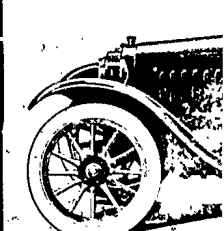
The Tire
We Have a
and

Remember, V
You Take
Ajax

SMIT

BUICK

FO
Both Le



Saxo

MYRON

POTSDA

Wit

Climb h
can be g
power and

Oa

attract the atten
found only in Oa

Let us show you
with shrewd car
and your family

